

STANDARD CONDUCTOR (FIG. 1)								
CATALOG NUMBER	CONDUCTOR RANGE (MIN - MAX)	SOLID CONDUCTOR	STRAND CONDUCTOR	COPPER WELD CONDUCTOR	DIM A IN. [MM]	DIM B IN. [MM]	APPROX. WT. EACH LB. [KG]	STANDARD PACK
GL110	.122 - .130 [3.10 - 3.30]	8	-	-	3.386 [86.00]	.512 [13.00]	.110 [0.05]	100
GL111+	.158 - .173 [4.00 - 4.40]	6	-	3 #12	3.386 [86.00]	.512 [13.00]	.110 [0.05]	100
GL112+	.193 - .205 [4.90 - 5.20]	4	-	8A	3.504 [89.00]	.551 [14.00]	.140 [0.06]	100
GL113	.224 - .232 [5.70 - 5.90]	3	4 (7)	6A	3.504 [89.00]	.551 [14.00]	.140 [0.06]	100
GL114	.248 - .260 [6.30 - 6.60]	2	3 (7), 4 (3)	5A	4.400 [110.00]	.748 [19.00]	.280 [0.13]	100
GL1140	.224 - .260 [5.70 - 6.60]	2 OR 3	3 (7), 4 (7)	-	6.500 [160.00]	.748 [19.00]	.340 [0.15]	100
GL115+	.283 - .291 [7.20 - 7.40]	1	2 (7)	4A	4.400 [110.00]	.748 [19.00]	.260 [0.12]	100
GL116	.319 - .327 [8.10 - 8.30]	1/0	1(7), 2 (3)	3A	4.400 [110.00]	.748 [19.00]	.290 [0.13]	100
GL117+	.358 - .366 [9.10 - 9.30]	2/0	1/0 (7), 1(3)	2A	5.512 [140.00]	.945 [24.00]	.530 [0.24]	100
GL118+	.402 - .413 [10.20 - 10.50]	3/0	2/0 (7)	-	5.512 [140.00]	.945 [24.00]	.520 [0.23]	100
GL119+	.453 - .465 [11.50 - 11.80]	4/0	3/0 (7)	-	6.900 [180.00]	1.181 [30.00]	1.000 [0.45]	50
GL120+	.520 - .528 [13.20 - 13.40]	-	4/0 (7,19)	-	6.900 [180.00]	1.181 [30.00]	1.000 [0.45]	50
GL121	.567 - .579 [14.40 - 14.70]	-	250 (19,37)	-	6.900 [180.00]	1.181 [30.00]	1.040 [0.47]	50
GL123	.622 - .634 [15.80 - 16.10]	-	300 (19,37)	-	8.661 [220.00]	1.496 [38.00]	2.343 [1.06]	25
GL125	.669 - .677 [17.00 - 17.20]	-	350 (19)	-	8.661 [220.00]	1.496 [38.00]	2.240 [1.02]	25
GL127	.713 - .728 [18.10 - 18.50]	-	400 (19,37)	-	8.661 [220.00]	1.496 [38.00]	2.240 [1.02]	25
GL128	.764 - .772 [19.40 - 19.60]	-	450 (37)	-	8.661 [220.00]	1.496 [38.00]	2.240 [1.02]	25
GL130	.803 - .815 [20.40 - 20.70]	-	500 (19,37)	-	8.661 [220.00]	1.496 [38.00]	2.160 [.98]	25

METRIC CONDUCTOR (FIG. 2)								
CATALOG NUMBER	CONDUCTOR RANGE (MIN - MAX)	CONDUCTOR (mm ²)	CU SOLID	CU STRAND	DIM A IN. [MM]	DIM B IN. [MM]	APPROX. WT. EACH LB. [KG]	STANDARD PACK
GL110M	.100 - .140 [2.60 - 3.50]	6	--	--	4.200 [107]	.512 [13]	.127 [.06]	100
GL111M	.120 - .170 [3.40 - 4.30]	10	#8 #6	--	4.200 [107]	.512 [13]	.127 [.06]	100
GL112M	.170 - .200 [4.20 - 5.20]	16 SOL.	--	--	4.360 [111]	.551 [14]	.167 [.08]	100
GL113M	.190 - .230 [5.00 - 5.80]	16 STR.	#4 #3	#4 7 STR	4.360 [111]	.551 [14]	.167 [.08]	100
GL114M	.220 - .260 [5.80 - 6.60]	25	--	--	5.460 [139]	.708 [18]	.343 [.16]	100
GL115M	.250 - .330 [6.50 - 7.60]	35	#2 #1 1/0	#2 7 STR	5.460 [139]	.708 [18]	.333 [.15]	100
GL117M	.310 - .370 [7.90 - 9.40]	50	--	--	6.480 [165]	.906 [23]	.588 [.27]	100
GL118M	.360 - .430 [9.40 - 10.90]	70	2/0 3/0	1/0 7 STR 2/0 7 STR	6.480 [165]	.906 [23]	.590 [.27]	100
GL119M	.440 - .500 [11.30 - 12.60]	95	4/0	3/0 7 STR	7.980 [203]	1.220 [31]	1.156 [.52]	50
GL120M	.500 - .560 [12.6 - 14.2]	120	--	4/0 7 STR	7.980 [203]	1.220 [31]	1.137 [.52]	50

ITEM NO.	DESCRIPTION	MATERIAL
1	SHELL	COPPER
2	CONE	COPPER
3	PLUG	BRASS
4	SPRING	STAINLESS STEEL OR GALVANIZED STEEL
5	CENTER STOP	STAINLESS STEEL

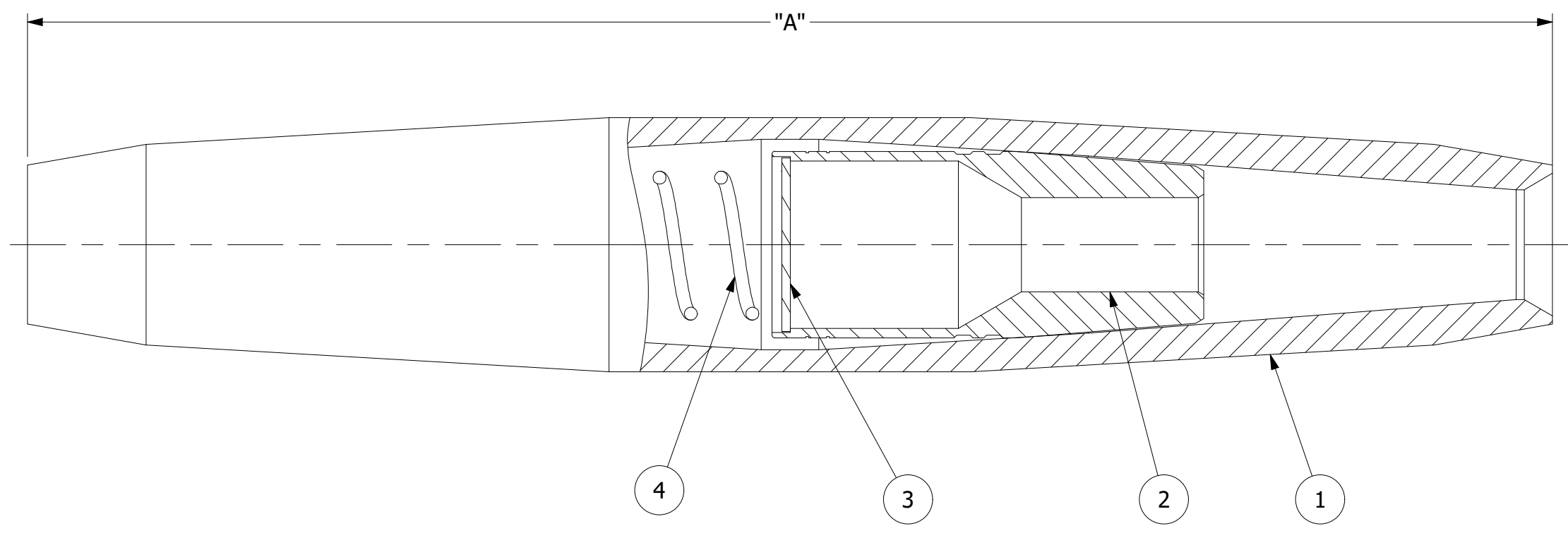
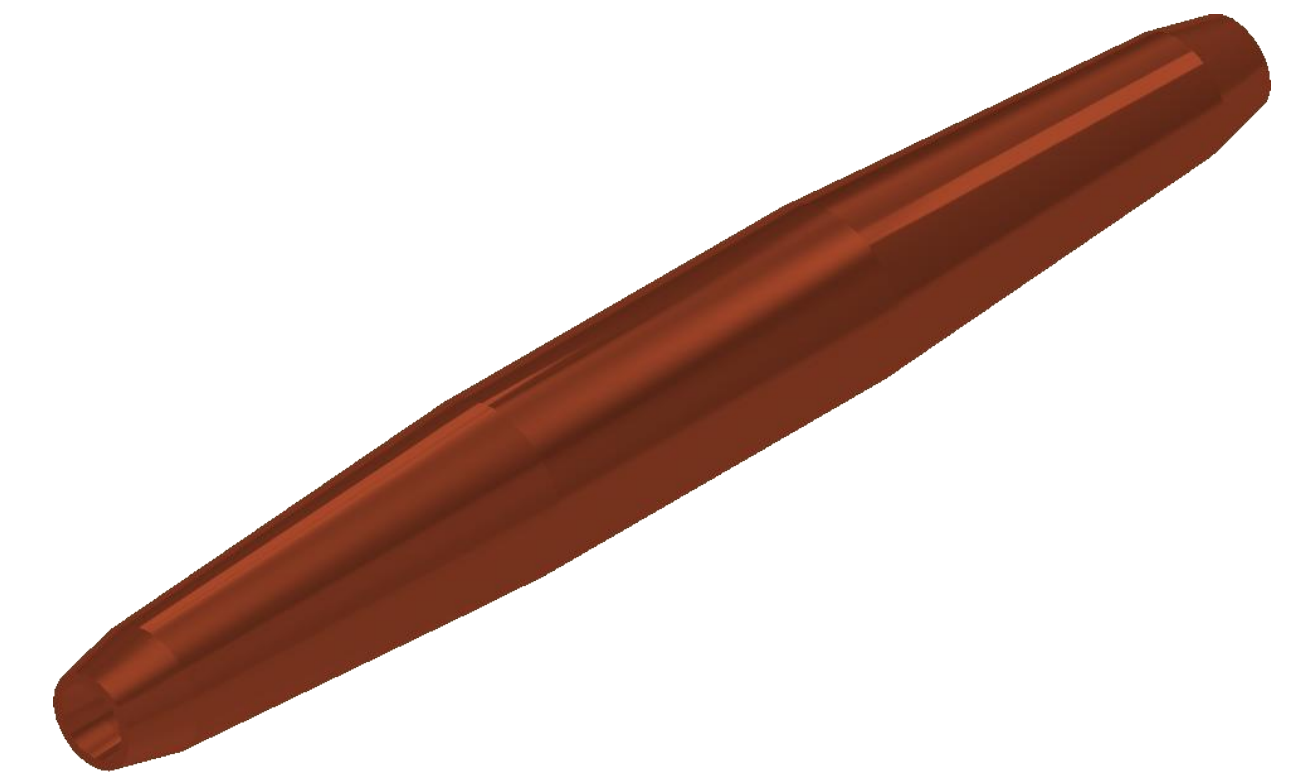


FIG. 1

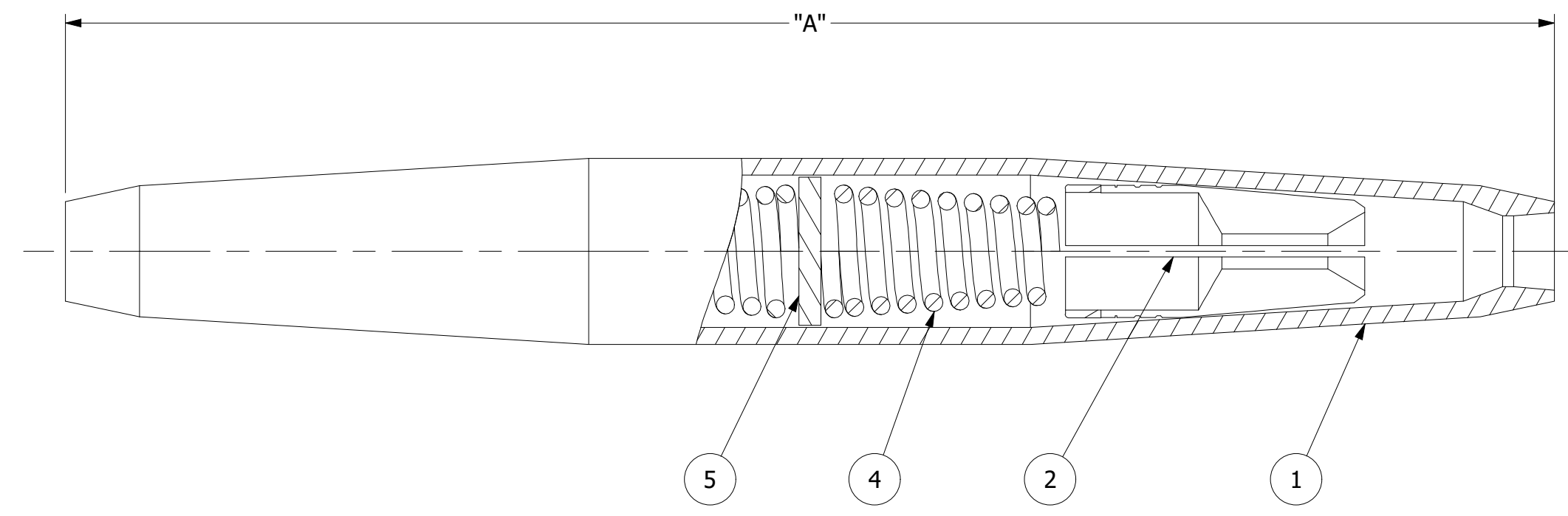
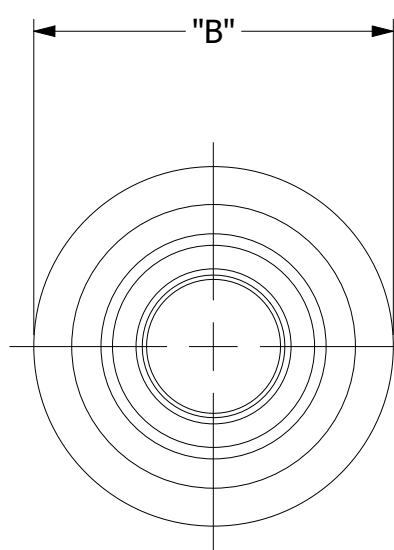
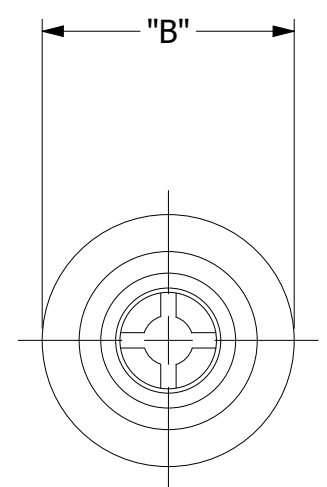


FIG. 2



- NOTES:
- ALL DIMENSIONS ARE FOR REFERENCE ONLY. DISTANCE IN. [MM], FORCE LBS. [kN], TORQUE IN. LBS. [N.m], & WEIGHT LBS. [KG]
 - RATINGS:
 - CONSULT FACTORY FOR RATING.
 - CONSULT FACTORY FOR COPPER WELD SIZES.
 - CERTIFICATIONS, SPECIFICATIONS, & STANDARDS:
 - MEETS COPPER STABILITY REQUIREMENTS PER ANSI C119.4
 - SUFFIXES & VARIANT CONFIGURATION:
 - "M" - METRIC CONDUCTOR (EX: GL110M)

230526030661	05/26/23	KM	SI	SP
EC #	DATE	CHANGED BY	CHECKED BY	APPROVED BY
DESCRIPTION:				WEIGHT, LBS
STANDARD CONDUCTORS INCLUDED				SEE TABLE
UPDATED TEMPLATE				
--				
--				
--				
ADDITIONAL COMMENTS: --				

HUBBELL POWER SYSTEMS, Inc.

TITLE
OVERHEAD LINE SPLICES
COPPER CONDUCTOR

CATALOG NUMBER: SEE TABLE

SIZE	DWG NO.	PART / ASSY NO.	REV
D	CC-25239	SEE TABLE	2

SCALE: 3 : 2 DRN BY: JT DATE: 12/22/17 SHEET 1 OF 1